

# NSR Prison Solution Case Study

Mexico Federal Prisons

5



NSR

Delivering  
Security  
that Works

# 12,000+

Surveillance Cameras

# 15,000+

Various Sensors

# 1,000+

Workstations

# 130+

RAID Servers

# 2

Systems per Prison

# 15

Pavilions in Different Locations

# 500+

Optic Trunk Switches

# 3

Prison Sites per Pavilion

## PROGRAM OVERVIEW

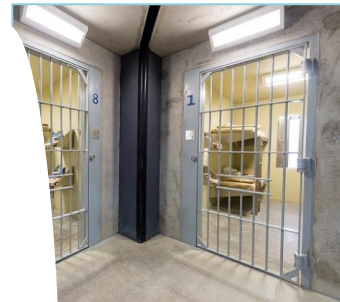
A national agency in charge of securing high risk prisoners in the new Mexican Federal Jails (CPS) required a 100% reliable, flexible security solution that can integrate thousands of cameras, microphones, thermal cameras, and access control systems.

NSR provided a dispersed solution that provided stand-alone capabilities on the prison, pavilion, and federal level.

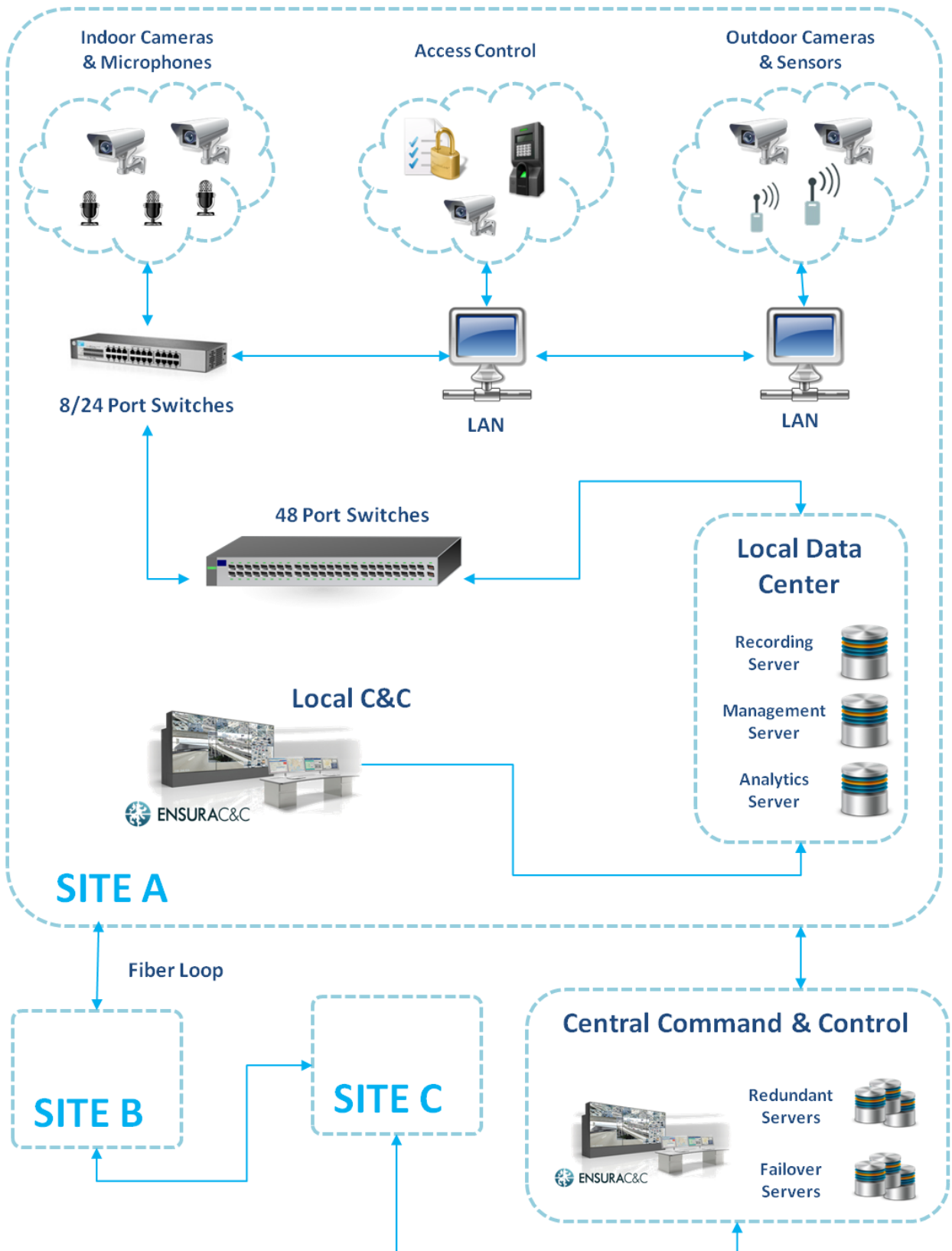
**Each prison has two operational systems:**

- **Security** - prison management solution
- **Intelligence** – staff & inmate monitoring & tracking

Since initial deployment the solution has grown to over 12,000 cameras and 15,000 sensors and 3<sup>rd</sup> party systems, with multiple control centers that support hundreds of users simultaneously.



# HIGH LEVEL PAVILION ARCHITECTURE





## CONCEPT OF OPERATIONS

Based on the NSR CONOPs each prison was divided into different zones, according to functionality - from **open zones** where personnel and prisoners mix, through **closed zones** such as prisoner cells, to always-empty **sterile zones**.

Each zone has a different type of sensor deployment, based on operational and physical constraints.

In order to integrate the different zones, sensors, and systems into a single operational unit, data, sensors, and subsystems are all managed via the ENSURA Command & Control system.

**The solution supports Command & Control hierarchies – with local C&C Centers connecting into a Central C&C.**

## SOLUTION ELEMENTS

### SECURITY

- CCTV Cameras
- Audio Recorders
- Face Recognition
- Thermal Sensors
- Motion Detectors

### ACCESS CONTROL

- CCTV Cameras
- Smart Fences
- Biometrics
- Face Recognition
- Scanning (vehicles, mail...)
- License Plate Recognition

### INTELLIGENCE

- External Databases
- Social Media Monitoring
- Audio Analysis
- Threat & Risk Analysis

### INTERCEPTION

- Cellular Interception & Jamming
- Mobile Satellite Phone Interception & Jamming
- Global Location (GSM & UMTS)
- Early Drone Notification
- Mass Cellular Interception GSM & UMTS & IDEN (2G, 3G)



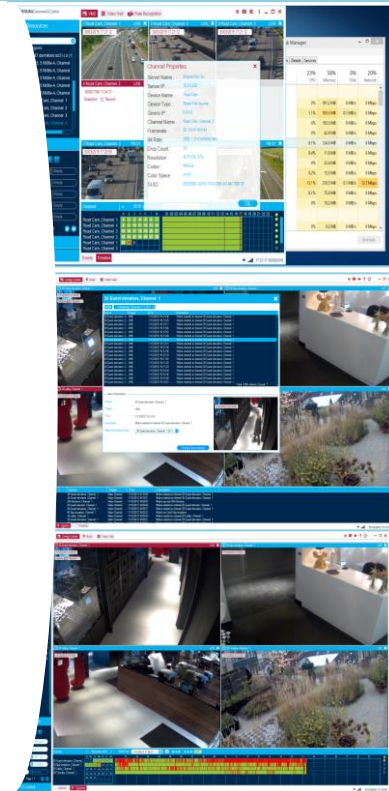


# ENSURA COMMAND & CONTROL

ENSURA Command & Control integrates data from all the solution sensors and systems, providing operators of all types with actionable information and real-time response capabilities.

ENSURA C&C ensures smooth “handover” between monitoring elements (tracking an object across multiple sensors), and between operational systems (door closing triggers light switch).

The C&C receives, integrates, analyzes, and releases information to users across the prison site, according to predefined procedures & assigned system permissions.



## OBJECT TRACKING

- Absolute surveillance across thousands of cameras.
- Operational connectivity of all cameras for complete Field of Vision & Line of Sight.
- “Back to the future” - track a moving object at X16.

## VIDEO CONTENT ANALYSIS

- VCA support for all incoming visual input, live & archived data.
- Cost-effective video analytics.
- Highest accuracy rate in the market.

## ANALYTICS

- Server & Sensor Side analytics.
- Video streams analysis supports various connections.

## SECURITY & INTELLIGENCE

- Management of 2 parallel operational systems per prison site.
- Real-time management of inmate & staff location.
- Integration of Security solution with operational systems.

# The NSR Group

NSR designs, implements , and supports advanced solutions that empower end users to manage Smart Cities, Transportation Hubs, Emergency Response Centers, and more.

**Out of The Box** - our thinking, designs and solutions are operationally oriented and adaptable to real-world situations.

**Leverage Assets** – we enable and upgrade existing sensors , legacy systems, and operational platforms.

**Design for Growth** - NSR designs solutions that grow with your needs and expand with new technologies.

**Tried & Tested** - proven technology, integration, and delivery capabilities across multiple global sites.

Find out more at [www.nsrhld.com](http://www.nsrhld.com)

## Offices

**NSR BV:** Netherlands, HQ + Administration

**ENSURA BV:** Netherlands, Europe R&D

**NSR Compass:** China, East Asia Programs

**ENSURA Israel:** Israel, Product R&D

**ENSURA Tech Solutions:** Israel, Integration

**NSR Mexico:** Mexico, South America Programs

## Subsidiaries

**ENSURA BV:** [www.ensura.com](http://www.ensura.com)

**ENSURA C&C:** [www.ensuracc.com](http://www.ensuracc.com)

## Contact

**Mail:** Hofstraat 4, 7071 KB Ulf  
THE NETHERLANDS

**Tel::** +31 (0)315-641230

**Email:** [info@nsrhld.com](mailto:info@nsrhld.com)