

# NSR Full Parking Solution

The NSR Urban Parking Solution allows authorities and drivers to identify open parking spaces and track parking patterns.



## Parking Node

The parking node is a cost-effective, outdoor/indoor, wireless, battery powered parking sensor.

User friendly and easy to deploy, the node links sibling nodes and communicates the parking space occupancy to a remote server



## General Features

- **Life Duration:** app. 5 years battery life
- **Operating Temp.:** -40°C to +85°C
- **Primary Sensing** Magnetic, Radar
- **Colors:** Concrete Gray

## Mechanical Features

- **Width** 113mm, **Length** 133mm, **Height** 29mm
- **Weight** 283gr
- **Enclosure:** fiber reinforced PC
- **Protection:** IP67, completely sealed
- **Resistance:** Heavy Vehicles
- **Fixation:** Glued or Screwed
- **Replacement:** Extract cover from screwed base

## Communication

- **Frequency Band:** 2.4Ghz (ISM Unlicensed band)
- **Nominal Output Power:** +5dBm





## Parking Gateway

The parking gateway is a pole-mounted outdoor/indoor unit that wirelessly communicates with a parking sensor network and transmits the collected data information to a remote server.

### General Features

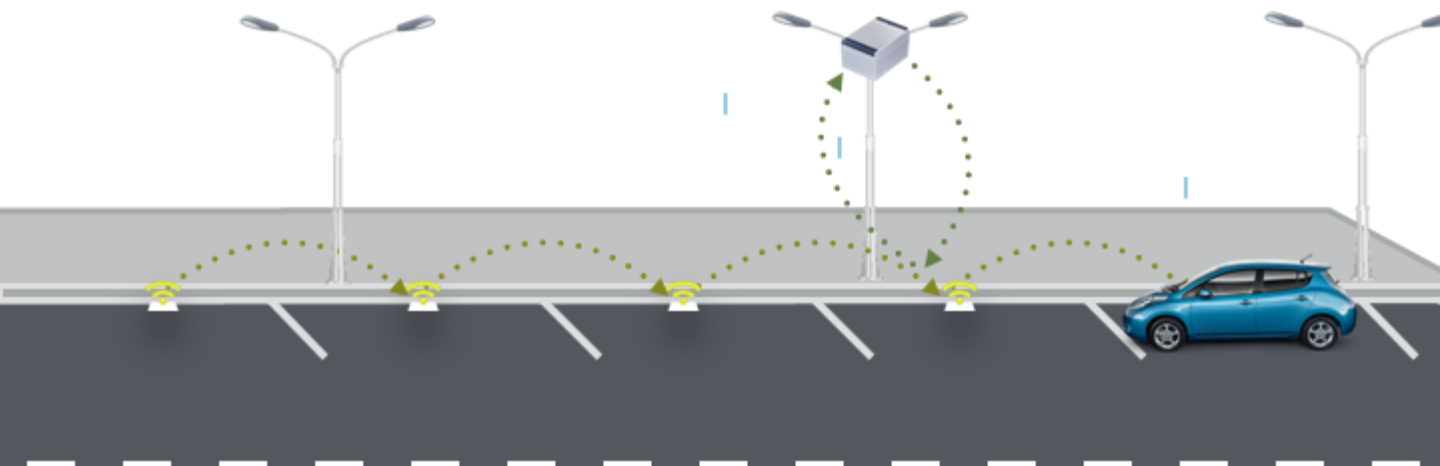
- **Power Source:** USB micro A connector
- **Maximum Power:** 120mW
- **Operating Temp.:** -20°C to +70°C

### Mechanical Features

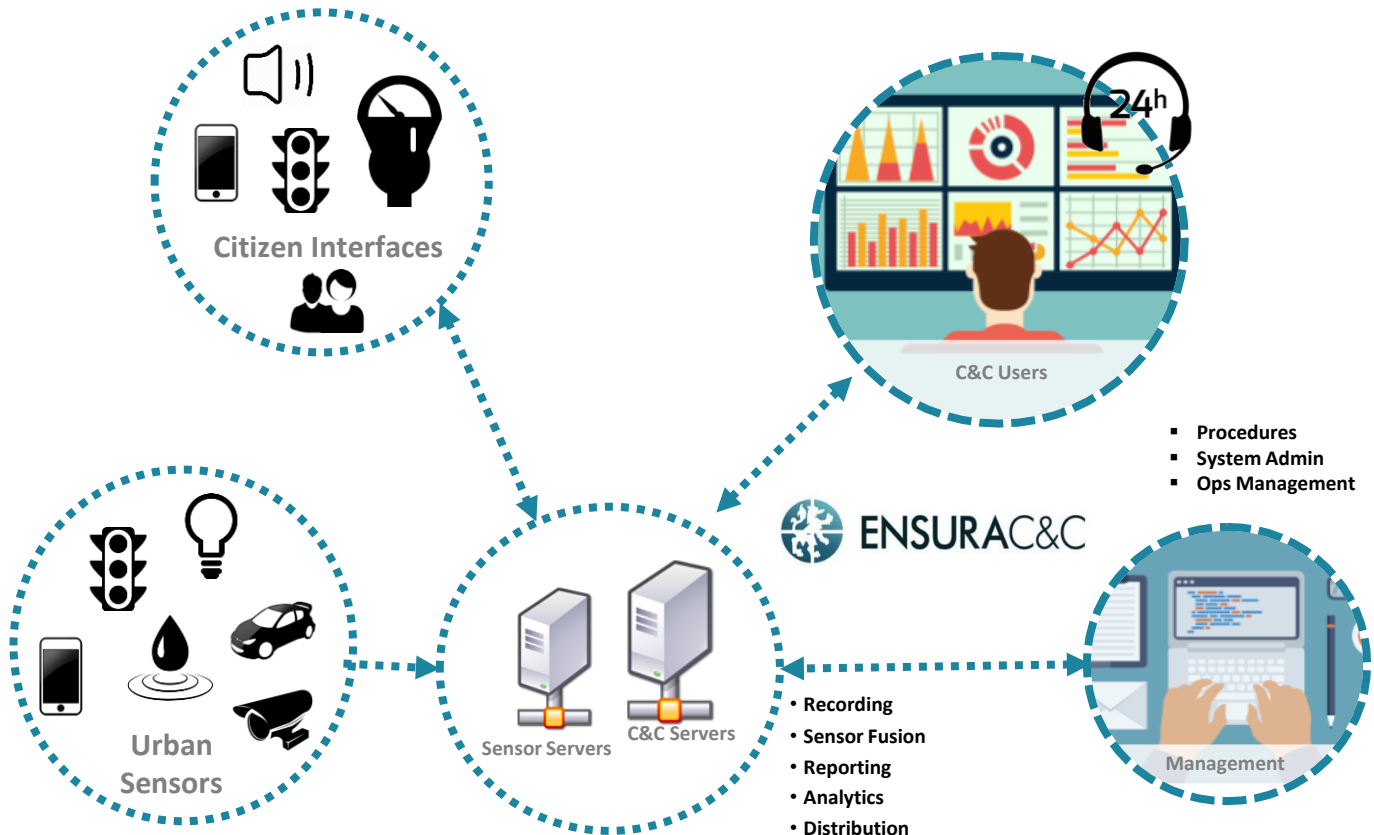
- **Width** 90mm, **Length** 130mm, **Height** 70mm
- **Enclosure:** Thermoplastic
- **Protection:** IP67, completely sealed
- **Color:** Grey
- **Fixation:** Pole mounting attachment

### Communication

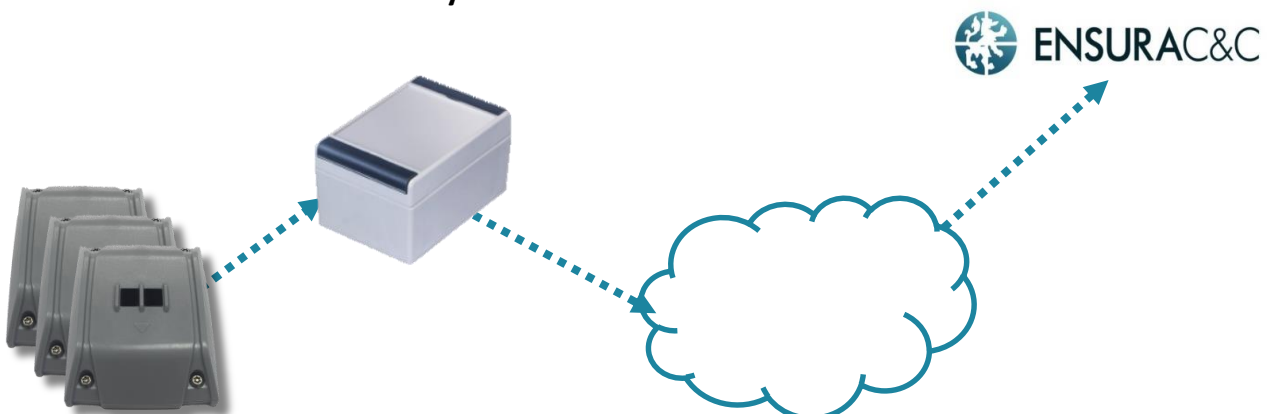
- **Wifi:** 802.11 a/b/g/n
- **Bluetooth:** Bluetooth 4.0
- **USB:** Ethernet over USB
- **Software Upgrade / Configuration:** USB



# Solution Architecture



- Up to 1000 hops between sensor and gateway
- Intel based Gateway solution



## Our Vision



**NSR is a global provider of sophisticated, challenge-focused Security programs, and one of the only companies focused exclusively on services for HLS and Defense integrators and 3rd party providers.**

We understand the growing and changing threat-scape, as well as the limitation of the human resources involved in the security solution – and strive to support operators and decision makers through innovative, highly automated, smart HLS solutions.

We know that a security solution is something that the end user has to live with every day, be they government agencies, military assets, or public installations - and we commit to delivering solutions that can and will become an integral and invisible part of the resources we wish to protect.

## Our Approach



NSR utilizes a wide variety of proprietary and COTS products and solutions, drawing on proven skills to design and integrate complex solution in multiple environments.

From CCTVs, through biometrics, to tactical UAVs and spectral imaging tools, we are uncommitted to any specific technology, approach or provider. We cast our net far and wide to utilize the most relevant technologies from inside and outside the industry, responding to the specific operational, budgetary, social, and public perception needs of your customers.

## Contact Us



Please visit us online at [www.nsrhld.com](http://www.nsrhld.com), or contact us for more information at [info@nsrhld.com](mailto:info@nsrhld.com)