

# NSR Total Stadium & Event Security

Risk Assessment | Threat Identification |  
Face Recognition | Body Scanning | Data  
Fusion | Crowd Control | Mass Sensor  
Integration | Intelligence & Interception |



Stadiums – whether dedicated to sports, concerts, or other mass events, present authorities with complex security and management challenges.



From the risks inherent in presenting terrorists with a quality target, through dangers such as petty theft that are integral to any crowded event, to the organization required to safely direct hundreds of thousands of people through a designated area in a given time period – all of these and more must be managed and controlled – by multiple stakeholders, concurrently.



**NSR understand the world of high-stake risks that confront event organizers. We specializes in providing large-scale integrated solutions designed to handle real-world tools and challenges, and:**



- Deter potential threats
- Accurately screen and identify threats
- Identify security events before they occur
- Manage people, cars, and sensors

# The NSR Solution

## Concept of Operations

**NSR's approach to Total Stadium & Event Security is based on designing a Concept of Operations around the needs of each specific stadium, based on our deep real-world experience in providing large-scale systems that integrate technology, infrastructure, and the human element.**



**Physical Barriers are Insufficient** - physical means do not provide the required security. Intelligence gathering is essential. Our solutions provide a semi-automated process that identifies suspicious events and persons flags them for investigation.

**Intersectional Security Circles** -our solutions offer a combination of technologies and activities that dramatically increase security with minimal impact on operations.



**Pre-registration**— a major component of our concept of operations focuses on pre-registration of vendors, personnel, and visitors, supporting advanced vetting and improving access control during routine and event operations.

**Open Doors** – our solutions are designed to support routine operations and workflows while providing total security. All scanning and identification technologies are invisible and non-intrusive, activating measures only in response to an event.



**Full C&C** – NSR's advanced ENSURA C&C is an integral part of our solutions, integrating data from any number of sensors, and providing abilities such as video analytics, face recognition, license plate recognition, and more.

**Automated Stakeholder Management** – our solutions provide security in a multi-stakeholder environment. With modules for tracking suppliers, providers, vendors, visitors, etc., the NSR solution enables authorities to manage and control all stakeholders throughout the event lifecycle.



# The NSR Solution

## Technological Elements

The physical deployment of the NSR Stadium & Event Solution is based on the principles outlined in the CONOPs, and the risk analysis performed in the field. The physical deployment incorporates a number of advanced technologies that enable NSR to offer end-to-end security.

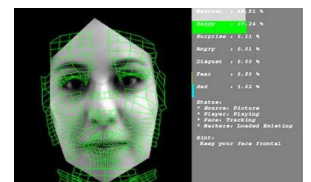
**ENSURA C&C** – our top-of-the-line Command & Control platform, which integrates and fuses data from any number of sensors of any type, and provides workflow, BI, and decision-supporting tools.



**Web Analysis** –advanced Open Source Intelligence search and semantic analysis engines, which identify trends in social networks and other open source data, and alert if suspicious activity is identified.

**Social Media Agent**– online virtual agents that penetrate social media for web analysis.

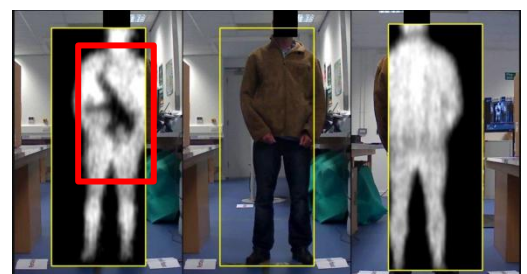
**Face Recognition**– advanced face recognition technology, both on the server and on the sensor side enable effective detection of blacklist and suspicious persons.



**License Plate Recognition**– advanced LPR, integrated with facial recognition and blacklist support.

**Video Analytics**– cutting-edge video analytics capabilities, supporting limitless object & person tracking across multiple cameras.

**Full Body Scanning**– rapid full-body scanning through passageways, capable of identifying concealed weapons, explosives, and other hazardous materials.



# The NSR Solution

## Event Timeline

The NSR Stadium & Event Security Solution is designed to provide end-to-end security that operates during routine, as well as emergency situations. All our security measures are designed to be non-intrusive and comply with privacy regulations – closing the security cycle safely, effectively, and discreetly..

Milestone	NSR System Activity	Result
<b>Routine</b>	<ul style="list-style-type: none"> <li>• OSINT scanning</li> <li>• Surveillance</li> </ul>	Identification of suspicious events, trends, and persons.
<b>Event Set</b>	Preregistration of all suppliers & vendors, including pictures, car details, etc.	<ul style="list-style-type: none"> <li>• Reduce illegal ticket sales</li> <li>• Perform background checks</li> <li>• Create White Lists</li> </ul>
<b>Ticket Sales</b>	<ul style="list-style-type: none"> <li>• OSINT scanning</li> <li>• Gather data on location of visitors</li> <li>• Estimate crowds</li> </ul>	<ul style="list-style-type: none"> <li>• Deployment plan for sensors</li> <li>• Control of sales</li> <li>• Parking arrangements</li> <li>• Traffic arrangements</li> </ul>
<b>Arrival</b>	<ul style="list-style-type: none"> <li>• Automated entrance for pre-registered persons</li> <li>• Automatic scanning against blacklists</li> <li>• Body scanning</li> </ul>	<ul style="list-style-type: none"> <li>• Crowd control</li> <li>• Blacklist identification</li> <li>• Risk identification</li> </ul>
<b>Duration</b>	<ul style="list-style-type: none"> <li>• Surveillance &amp; Analytics</li> <li>• Laser scanning</li> <li>• Body scanning</li> </ul>	<ul style="list-style-type: none"> <li>• Crowd control</li> <li>• Blacklist identification</li> <li>• Real-time response</li> <li>• Risk Identification</li> </ul>
<b>After</b>	<ul style="list-style-type: none"> <li>• OSINT scanning</li> <li>• Surveillance</li> </ul>	Identification of suspicious events, trends, and persons.

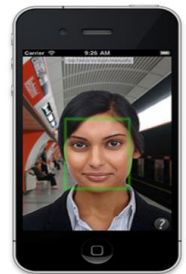
**In order to protect personal data, system databases will be deployed in a distributed architecture , and private information saved locally and erased on a defined date after the event (usually 24 h) automatically.**

# The NSR Solution

## How Does it Work?

**From the user side, the entire solution can be accessed and used via cellular and C&C interfaces designed for different user types:**

**Registered Personnel App**— for all pre-registered personnel: vendors, providers, suppliers, etc, enabling personnel to enter data, including pictures and car information into the system, and receive improved Access Control to the site.



**Visitor App**— event visitors will be able to download this application once they've purchased tickets, and utilize it to enter their information for vetting (picture, license plate no.) plan arrival, find parking, plan travel routes, find seats, contact support, etc.

**UEFA App**— for UEFA personnel only, enabling them to receive real-time updates, enter information to the system, query other personnel or the C&C, etc.

**C&C Wall** — full C&C command station, which will include a video wall, and all system modules, screens, and features.





# The NSR Experience

## National Intelligence

<b>Challenge</b>	A national intelligence agency with a compound in an urban area required a solution that will completely automate detection and recognition of attempts to intrusion attempts, as well as supporting intelligence-gathering activities.
<b>Solution</b>	<p>NSR utilized both in-house products and external technologies to provided an intelligent video surveillance system combined with advanced video analytics.</p> <p>The software embedded all installed detecting elements – upgrading rather than replacing the existing deployment.</p>

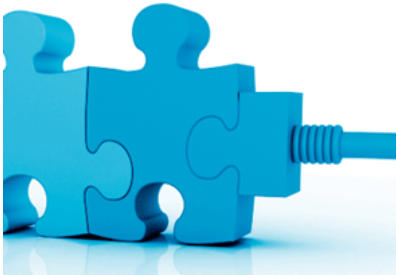
## Safe City

<b>Challenge</b>	The government of Argentina required a Safe City solution that will simultaneously supported several cities - each working independently while managing hundreds to thousands of sensors and applications.
<b>Solution</b>	<p>NSR provided a solution that handles thousands of cameras, sensors, SOS units, safety systems, operational systems, communications and 3rd party critical applications.</p> <p>Software was customized to deal with problematic wireless connectivity, providing ongoing control even when the network is unstable.</p>

# The NSR Advantage

## Experience

NSR has extensive experience in designing, deploying, and delivering large-scale, complex integrated security solutions on time and on schedule, to full customer satisfaction.



## Integration

NSR understands the complex interplay of CONOPS, technology, and methodology required to design and deliver a working Security solution.

## Return on Investment

NSR solutions integrate with legacy systems and utilize existing infrastructure in order to reduce time-to-air and increase ROI.



## Large-Scale Growth Potential

NSR solutions are designed to manage large-scale deployments, integrate all existing legacy systems – and scale up and out with future technologies.

## Our Vision



**NSR is a global provider of sophisticated, challenge-focused Security programs, and one of the only companies focused exclusively on services for HLS and Defense integrators and 3rd party providers.**

We understand the growing and changing threat-scape, as well as the limitation of the human resources involved in the security solution – and strive to support operators and decision makers through innovative, highly automated, smart HLS solutions.

We know that a security solution is something that the end user has to live with every day, be they government agencies, military assets, or public installations - and we commit to delivering solutions that can and will become an integral and invisible part of the resources we wish to protect.

## Our Approach



**NSR utilizes a wide variety of proprietary and COTS products and solutions, drawing on proven skills to design and integrate complex solution in multiple environments.**

From CCTVs, through biometrics, to tactical UAVs and spectral imaging tools, we are uncommitted to any specific technology, approach or provider. We cast our net far and wide to utilize the most relevant technologies from inside and outside the industry, responding to the specific operational, budgetary, social, and public perception needs of your customers.

## Contact Us



Please visit us online at [www.nsrhld.com](http://www.nsrhld.com), or contact us for more information at [info@nsrhld.com](mailto:info@nsrhld.com)